



HD260Super Hydraulic Drill Rig

A Sturdy, Reliable and More Powerful Multi-Purpose & Multi-Functional Drill Rig



Dual Control



* Hydraulic Control

Super High-Torque Double Head



* High Torque Double Head With 45,000 ft.lb Torque Bottom Head

30" Double Clamp



* Upper Clamp With 16" Adjustable Height



* Radio Remote Control

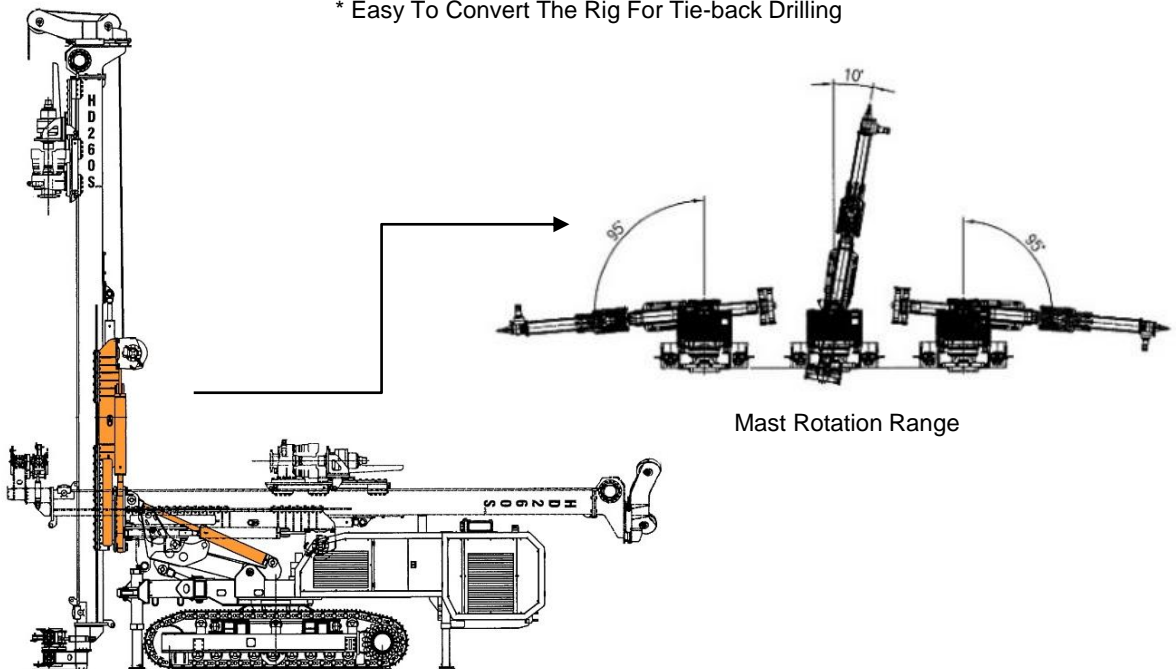


* 30" Sliding Stroke Between Two Heads



Tie-back Kit

* Easy To Convert The Rig For Tie-back Drilling





Service Weight	41,700 kg [91,740 lb]		
Drive	Diesel Engine "Cummins" QSB6.7 Tier 4i Power Rating = 194kW (260 HP) @2200 rpm		
Hydraulic System	Max. Pressure 250 Bar [3625 psi] Q1 = 170 l/min [44.9 gal/min] Q2 = 170 l/min [44.9 gal/min] Q3 = 170 l/min [44.9 gal/min] Q4 = 39 l/min [10.3 gal/min] Q5 = 120 l/min [31.7 gal/min] Q6 = 26l/min [6.9 gal/min]		
Hydraulic Oil Tank	Capacity 600 lts [158.5 gal]		
Fuel Tank	Capacity 340 lts [89.8 gal]		
Crawler Undercarriage	Max. Travelling Speed	: 1.2 km/hr	[0.75 mph]
	Climbing Ability	: 20 °	
	Specific Ground Pressure	: 0.8 kg/cm ²	[11.38 psi]
Mast and Feed Assembly	Mast Length	: 13,075 mm	[42.9']
	Stroke Length	: 10,000 mm	[32.8']
	Feed Force	: 20,000 kg	[44,090 lb]
	Pullback Force	: 20,000 kg	[44,090 lb]
	Feed Speed	: 0.31 m/s	[1.02 ft/s]
	Retract Speed	: 0.31 m/s	[1.02 ft/s]
Rotator	Model	HR2400	HR6010
		<u>Stage 1</u>	<u>Stage 2</u>
	Rotary Speed (rpm)	20	40
	Torque (kgm)	2,436	1,218
	Torque (ft/lb)	[17,620]	[8,810]
		<u>Stage 1</u>	<u>Stage 2</u>
	Rotary Speed (rpm)	13	26
	Torque (kgm)	6,222	3,111
	Torque (ft/lb)	[45,004]	[22,502]
Winch	Lifting Force	: 5,750 kg	[12,677 lb] (1 st layer)
	Line Speed	: 24.7 m/min	[81 ft/min] (1 st layer)
Water Pump (1)	Max Flow	: 399 l/min	[105 gal/min]
	Max. Pressure	: 25 bar	[363 psi]
Water Pump (2)	Max Flow	: 85 l/min	[22.5 gal/min]
	Max. Pressure	: 25 bar	[363 psi]
Hydraulic Double Clamp	Max. Casing Size	: Ø 762 mm	[30"]
	Break Out Clamp	: 406 mm	[16"]
	Sliding Stroke		
Dimensions: (while mast down to horizontal)	Length	: 14,562 mm	[47.8']
	Width	: 2,840 mm	[9.3']
	Height	: 3,932 mm	[12.9']

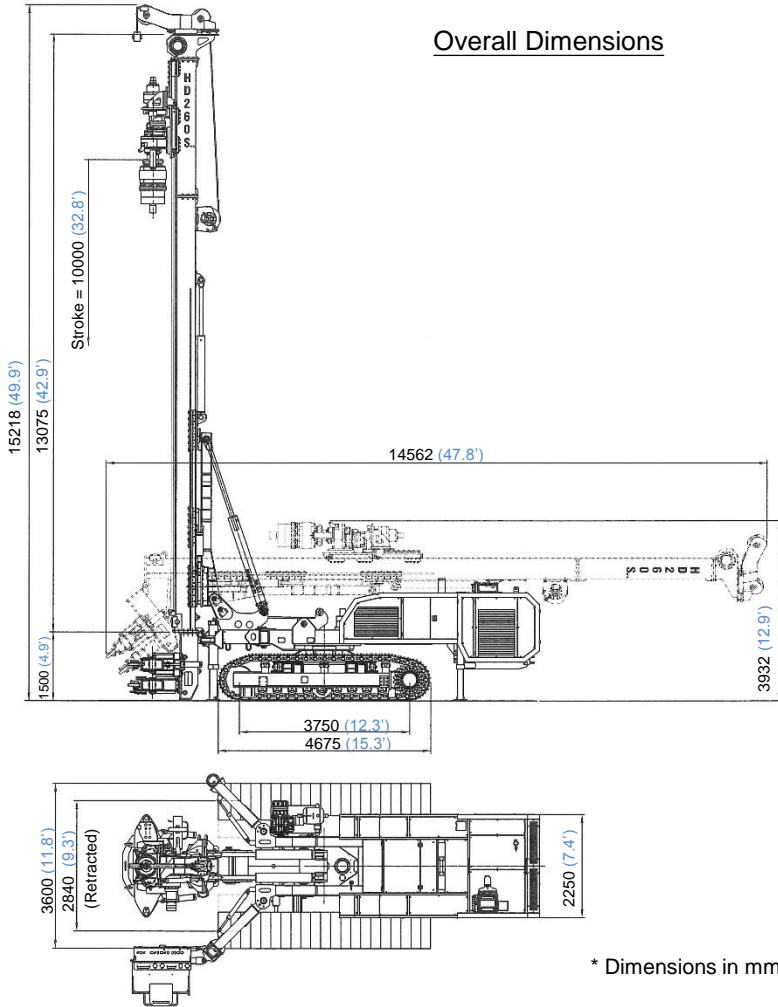
Note : - Specifications are subject to change without notice in accordance with HD Engineering's policy of continuing development.

- All data contained in this brochure are indicative and does not take power losses and efficiency losses into account.

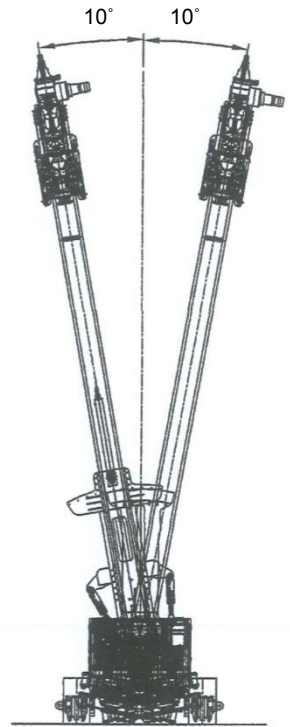


HD260Super Hydraulic Drill Rig

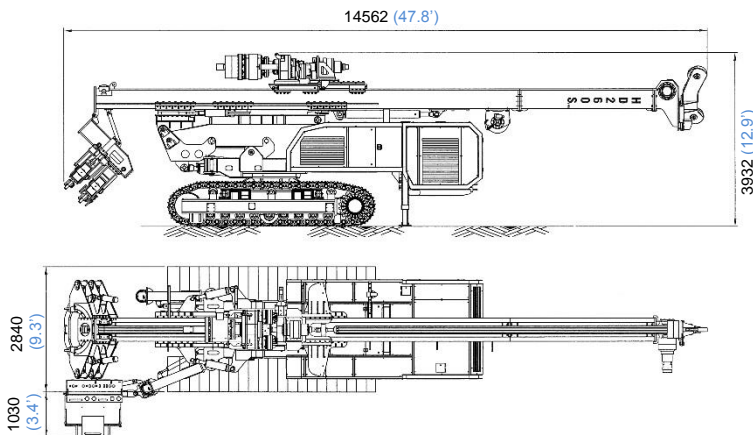
Overall Dimensions



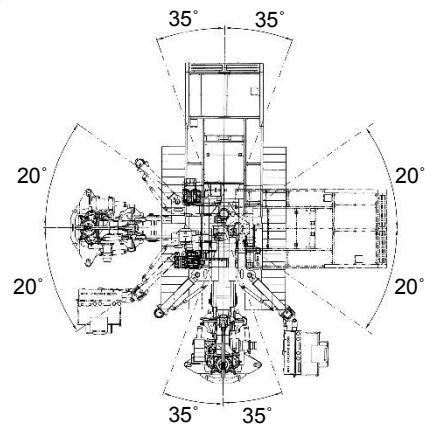
* Dimensions in mm



Mast Rotation Range



Foldable Front Port of Mast for Transportation



Vertical Drilling Range



No. 21 Yip Wo Street, On Lok Tsuen, Fanling, N.T., Hong Kong
 Tel : (852) 2675 4789 E-mail : sales@hdengineering.com
 Fax : (852) 2677 4536 Web-site : <http://www.hdengineering.com>



2206 Todd Road, Aliquippa, PA 15001, USA
 Tel : 724 203 4709 E-mail : Sales@tjmdrilltools.com
 Fax: 724 203 4758 Web-Site : www.tjmdrilltools.com